



Renewal Date: //31/2010
Caches Found: 1574
Caches Hidden: 68
[My Public Profile](#) | [Log Out](#)

GCVote Configuration

Stat Bar

 **siig's stats**
Found: 1574 / Hidden: 68
[View my profile](#)

Your GPS

Your GPS Devices ▾

Search Options

Search for nearest geocaches [from your home coordinates](#) ([filter out finds](#)).

- List newest in [Denmark](#)
- View nearby [benchmarks](#)
- View nearby [waymarks](#)



[Update Home Coordinates](#)
[Advanced Search](#)

User Routes

- [Create a Route](#)
- [Find Routes](#)
- [Upload GPX/KML Route](#)

Field Notes

[Access Your Field Notes](#) for supported GPS devices and applications.

Geocaching with Twitter

Groundspeak can [send updates to Twitter](#) when you post Field Notes via SMS through TextMarks or from the

Åben siden: your profile – rul ned på siden til Access your field notes

Klik de steder hvor som den sorte pil peger på



Geocaching > [Your Profile](#) > Field Notes

Field Notes

No logs have been found for your account at this time.

Groundspeak's Geocaching Field Notes are an easy way to keep track of the caches you found during your geocache hunts.

Your Field Notes

Supported Devices

Geocaching.com currently supports Field Notes using the following devices and applications:

Groundspeak - Geocaching iPhone Application

Using the Groundspeak Geocaching iPhone application, you can submit Field Notes for individual geocaches by pressing the "Post a Field Note" button on the Geocache detail page.

Trimble - Geocache Navigator Application

Using Trimble's Geocache Navigator, you can log your Field Notes on the phone and they will show up on this page once you link the phone to your account. Click [here](#) to link Trimble's Geocache Navigator to your account.

Garmin - Colorado and Oregon GPS Receivers

While Geocaching with the Garmin Colorado or Garmin Oregon you can upload your geocache finds directly from the device once you return back from your day geocaching. Click [here](#) to upload Field Notes from your Garmin Colorado or Garmin Oregon.

DeLorme - Earthmate PN-40 GPS Receivers

While Geocaching with the DeLorme PN-40 you can upload your geocache finds directly from the device once you return back from your day geocaching. Click [here](#) to upload Field Notes from your DeLorme PN-40.

Lowrance - Endura GPS Receivers

While Geocaching with the Lowrance Endura you can upload your geocache finds directly from the device once you return back from your day geocaching. Click [here](#) to upload Field Notes from your Lowrance Endura.

WIG STARTED

SEEK A CACHE

BENCHMARK

CACHE ITEMS

PROFILE

JRCES

MS

EVIEWS

TOP FOR GEAR


Advertisement
Stickers
op Groundspeak



Klik hvor der
står: here

Geocaching > Your Profile

Geocaching - The Official Global GPS Cache Hunt Site



[Geocaching](#) > [Your Profile](#) > [Field Notes](#) > Upload Field Notes

Upload Your Field Notes File

By default, the site will not upload Field Notes contained in your file before **3/20/2010 3:58:00 PM** to reduce accidental duplication of all Field Notes.

☒ Ignore logs before 3/20/2010 3:58:00 PM

[Return to Field Notes](#)

Instructions

Garmin | DeLorme | Lowrance Endura

To upload Field Notes from your **Garmin Colorado** or **Garmin Oregon**:

1. Plug your Garmin device into your computer with a USB cable.
2. Click "Browse" on this web page and go to the Garmin directory on your device's drive.
3. Select the file named "geocache_visits.txt" and click "Upload" on this page to upload your Field Notes.
4. We recommend that you delete the "geocache_visits.txt" file on your device once your Field Notes have been successfully uploaded.

Once the Field Notes are uploaded you can return to the [Field Notes list page](#) to start logging your finds.

GETTING STARTED

HIDE & SEEK A CACHE

FIND A BENCHMARK

TRACKABLE ITEMS

YOUR PROFILE


RESOURCES

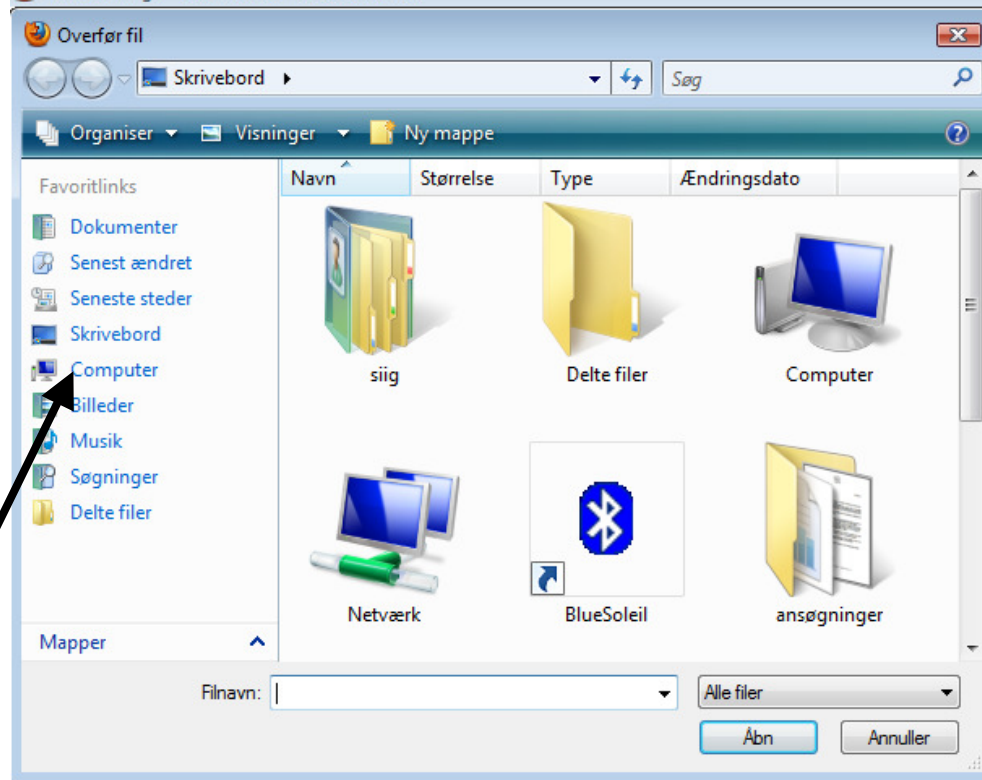
FORUMS

GPS REVIEWS

SHOP FOR GEAR

Advertisement





your file before 3/20/2010

GPS REVIEWS

SHOP FOR GEAR



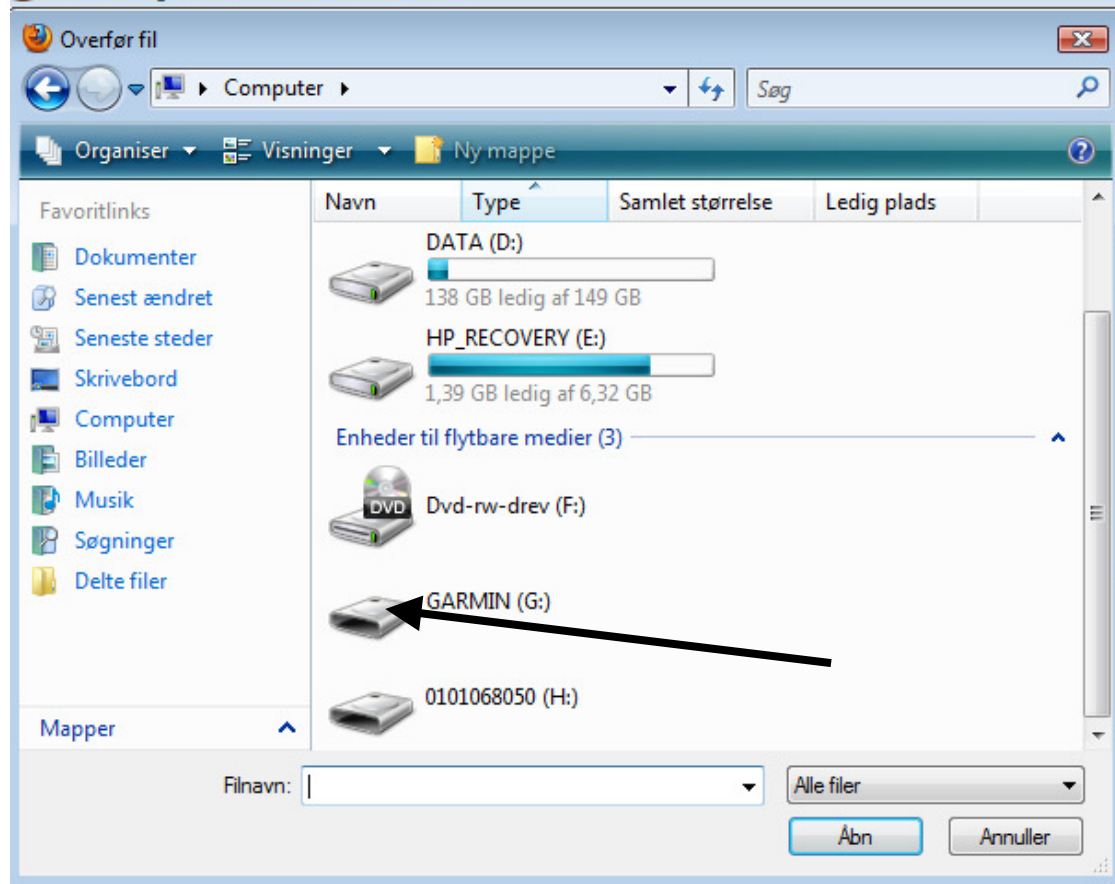
Instructions

Garmin DeLorme Lowrance Endura

To upload Field Notes from your **Garmin Colorado** or **Garmin Oregon**:

1. Plug your Garmin device into your computer with a USB cable.
2. Click "Browse" on this web page and go to the Garmin directory on your device's
3. Select the file named "geocache_visits.txt" and click "Upload" on this page to up
4. We recommend that you delete the "geocache_visits.txt" file on your device on

Once the Field Notes are uploaded you can return to the [Field Notes list page](#) to star



your file before **3/20/2010 3:58:**

GPS REVIEWS

SHOP FOR GEAR



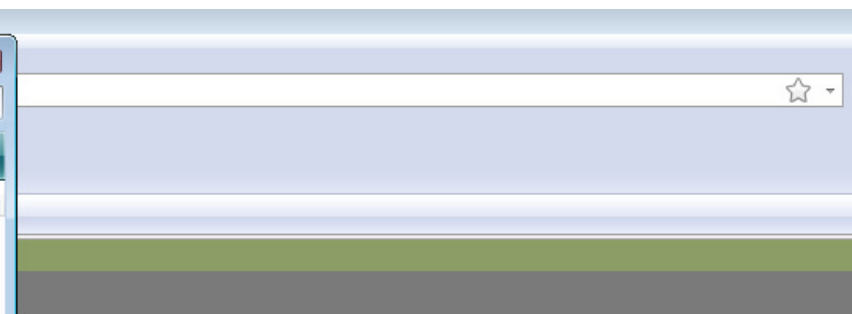
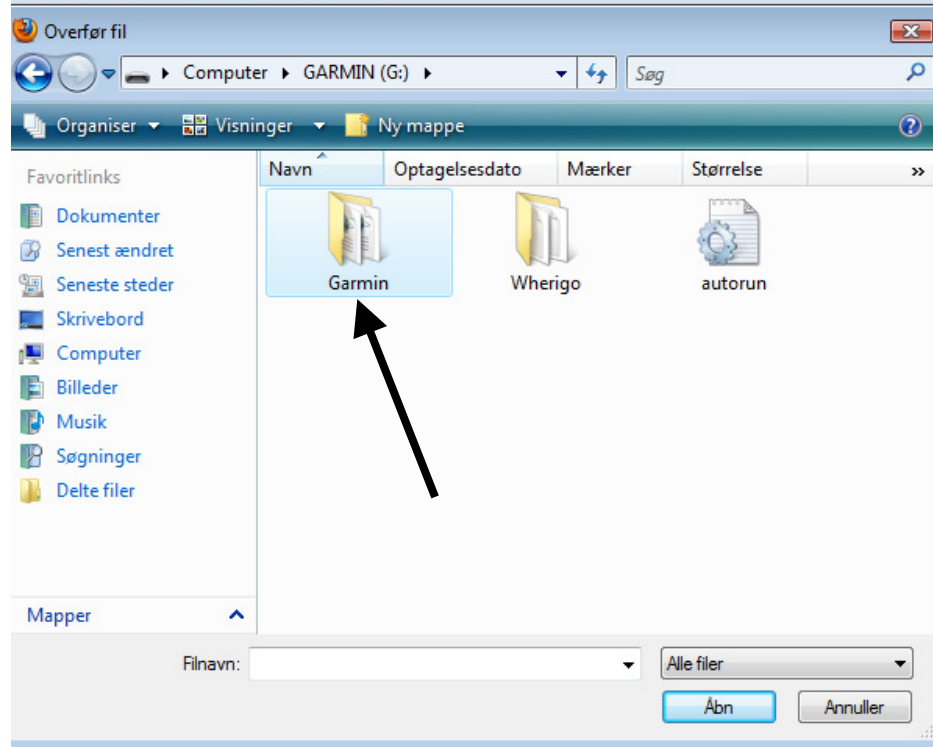
Instructions

Garmin DeLorme Lowrance Endura

To upload Field Notes from your **Garmin Colorado** or **Garmin Oregon**:

1. Plug your Garmin device into your computer with a USB cable.
2. Click "Browse" on this web page and go to the Garmin directory on your device's drive.
3. Select the file named "geocache_visits.txt" and click "Upload" on this page to upload y
4. We recommend that you delete the "geocache_visits.txt" file on your device once you

Once the Field Notes are uploaded you can return to the [Field Notes list page](#) to start loggi



your file before **3/20/2010 3:58:00 PM** to reduce accidental duplicate logs. Unc

GPS REVIEWS

SHOP FOR GEAR

Advertisement

Caches Along a Route

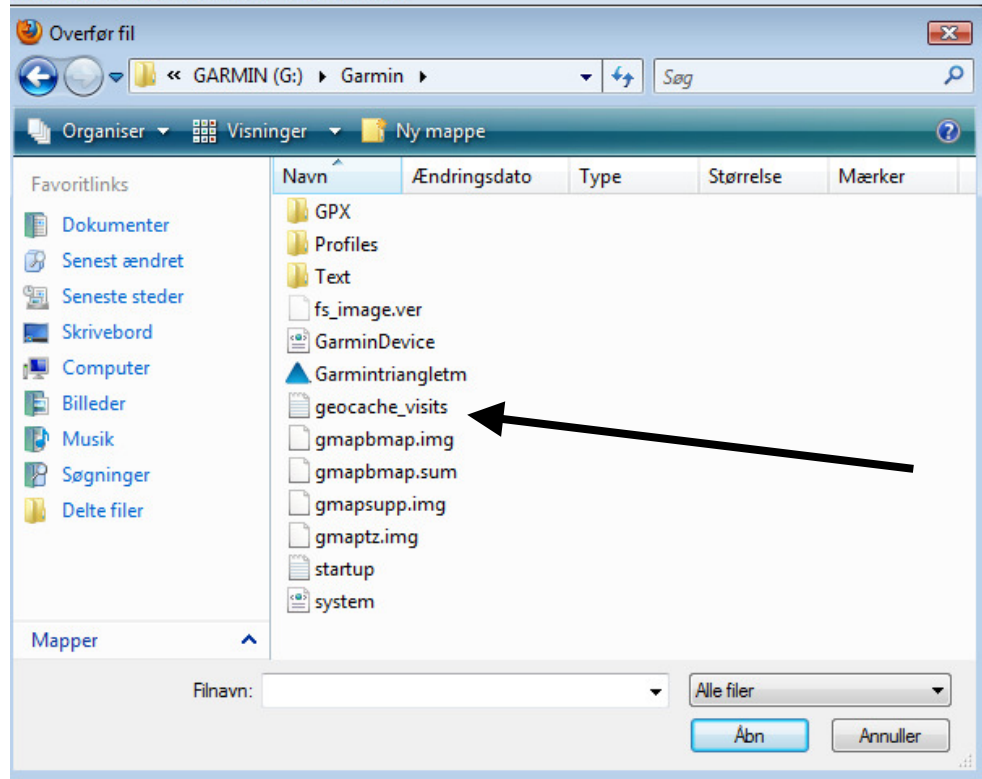
Instructions

Garmin DeLorme Lowrance Endura

To upload Field Notes from your **Garmin Colorado** or **Garmin Oregon**:

1. Plug your Garmin device into your computer with a USB cable.
2. Click "Browse" on this web page and go to the Garmin directory on your device's drive.
3. Select the file named "geocache_visits.txt" and click "Upload" on this page to upload your Field Notes.
4. We recommend that you delete the "geocache_visits.txt" file on your device once your Field Notes have been successfully uploaded.

Once the Field Notes are uploaded you can return to the [Field Notes list page](#) to start logging your finds.



your file before **3/20/2010 3:58:00 PM** to reduce accidental duplicate log



Instructions

Garmin DeLorme Lowrance Endura

To upload Field Notes from your **Garmin Colorado** or **Garmin Oregon**:

1. Plug your Garmin device into your computer with a USB cable.
2. Click "Browse" on this web page and go to the Garmin directory on your device's drive.
3. Select the file named "geocache_visits.txt" and click "Upload" on this page to upload your Field Notes.
4. We recommend that you delete the "geocache_visits.txt" file on your device once your Field Notes have been successfully upl

Once the Field Notes are uploaded you can return to the [Field Notes list page](#) to start logging your finds.

Geocaching > Your Profile - Mozilla Firefox

Filer Rediger Vis Historik Bogmærker Funktioner Hjælp


http://www.geocaching.com/my/uploadfieldnotes.aspx

Mest besøgte I gang med Firefox Seneste nyheder

Norton Kort og loginoplysninger

Geocaching > Your Profile

Geocaching - The Official Global GPS Cache Hunt Site You are log

 [Geocaching](#) > [Your Profile](#) > [Field Notes](#) > Upload Field Notes

Upload Your Field Notes File

By default, the site will not upload Field Notes contained in your file before **3/20/2010 3:58:00 PM** to reduce accidental duplicate logs. Uncheck the opti all Field Notes.

☒ Ignore logs before 3/20/2010 3:58:00 PM

G:\Garmin\geocache_vi

[Return to Field Notes](#)

Instructions

Garmin DeLorme Lowrance Endura


To upload Field Notes from your **Garmin Colorado** or **Garmin Oregon**:

1. Plug your Garmin device into your computer with a USB cable.
2. Click "Browse" on this web page and go to the Garmin directory on your device's drive.
3. Select the file named "geocache_visits.txt" and click "Upload" on this page to upload your Field Notes.
4. We recommend that you delete the "geocache_visits.txt" file on your device once your Field Notes have been successfully uploaded.

Once the Field Notes are uploaded you can return to the [Field Notes list page](#) to start logging your finds.

Advertisement

Caches Along a Route



Geocaching > Your Profile - Mozilla Firefox

Filer Rediger Vis Historik Bogmærker Funktioner Hjælp


http://www.geocaching.com/my/uploadfieldnotes.aspx

Mest besøgte I gang med Firefox Seneste nyheder

Norton Kort og loginoplysninger

Geocaching > Your Profile

Geocaching - The Official Global GPS Cache Hunt Site

 [Geocaching](#) > [Your Profile](#) > [Field Notes](#) > Upload Field Notes

Upload Your Field Notes File

By default, the site will not upload Field Notes contained in your file before **3/28/2010 11:00:00 AM** to reduce accidental duplicate all Field Notes.

☒ Ignore logs before 3/28/2010 11:00:00 AM

39 records were successfully uploaded.

[Return to Field Notes](#)

Instructions


To upload Field Notes from your **Garmin Colorado** or **Garmin Oregon**:

1. Plug your Garmin device into your computer with a USB cable.
2. Click "Browse" on this web page and go to the Garmin directory on your device's drive.
3. Select the file named "geocache_visits.txt" and click "Upload" on this page to upload your Field Notes.
4. We recommend that you delete the "geocache_visits.txt" file on your device once your Field Notes have been successfully uploaded.

Once the Field Notes are uploaded you can return to the [Field Notes list page](#) to start logging your finds.

Advertisement

Stroll,
hike,
swim,
bike



Geocaching > Your Profile > Field Notes - Mozilla Firefox

Eiler Rediger Vis Historik Bogmærker Funktioner Hjælp


http://www.geocaching.com/my/fieldnotes.aspx

Mest besøgte I gang med Firefox Seneste nyheder

Norton Kort og loginoplysninger

Geocaching > Your Profile > Field No...







Geocaching - The Official Global GPS Cache Hunt Site You are logged in

 [Geocaching](#) > [Your Profile](#) > Field Notes

Field Notes

Groundspeak's Geocaching Field Notes are an easy way to keep track of the caches you found during your geocache hunts.

Your Field Notes

Listing	Date	Log Type	Actions
 Black Hills, South Dakota	24 March 2010 17:06:00	😊 Found it	Compose Log Delete Note
 Russerhulen igen	24 March 2010 17:23:00	😊 Found it	Compose Log Delete Note
 Egebiergvej 2	24 March 2010 17:47:00	😊 Found it	Compose Log Delete Note
 Friluftsland # 2	24 March 2010 18:29:00	😊 Found it	Compose Log Delete Note
 Arena Syd, Vamdrup	27 March 2010 09:56:00	😊 Found it	Compose Log Delete Note
 Dag / Nat Event - Kolding	27 March 2010 09:57:00	😊 Found it	Compose Log Delete Note

Du skulle gerne kende den side du kommer ind på ;-)